

FREEHOLD



House - Detached

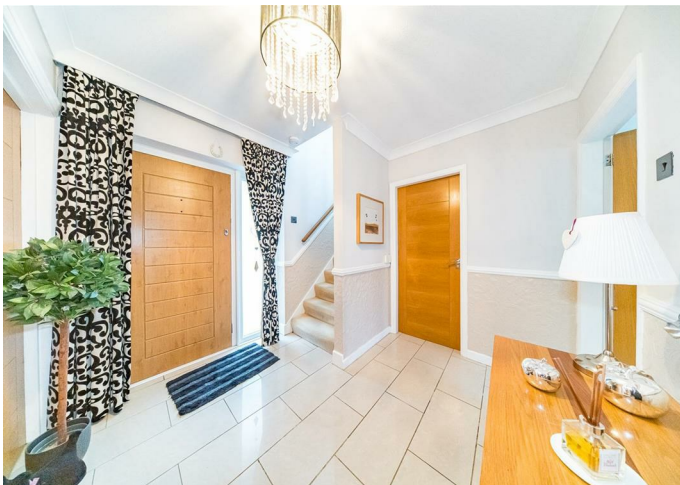
27 LONGMEADOW ROAD, KNOWSLEY VILLAGE, KNOWSLEY, MERSEYSIDE, L34 2UN

Asking Price

£499,000

FEATURES

- Double fronted, five bedroom detached property
- Entrance hall with porcelain tiled floor, downstairs cloaks
- Utility room with a build in fridge and sun lounge
- Well tended gardens to the front and rear
- Situated in a much sought after location of Knowsley
- Lounge and dining kitchen with built in appliances
- Family bathroom with a modern suite
- Driveway for off road parking



5 1 3 D



BROOKS
ESTATE AND LETTING AGENTS LTD

5 Bedroom House - Detached located in Knowsley

Conveniently situated in the desirable area of Knowsley Village, Longmeadow Road presents a splendid opportunity to acquire a charming double fronted, five-bedroom detached house. This post-1914 property boasts an impressive layout, featuring three spacious reception rooms that provide ample space for both relaxation and entertaining.

The heart of the home is complemented by a well-appointed bathroom, ensuring convenience for family living. The property is set within a generous plot, offering a large rear garden that is perfect for outdoor activities and gatherings. The front of the house features a beautifully maintained open plan lawn, accompanied by a driveway that leads to a single garage, providing both parking and storage solutions.

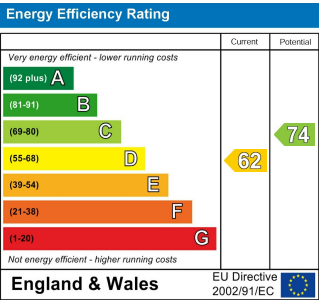
This residence is ideally located close to excellent local schools, shops, and transport routes, making it a perfect choice for families and commuters alike. The combination of space, location, and potential makes this property a rare find in the market.

We highly recommend scheduling an early viewing to fully appreciate the charm and substantial nature of this lovely home. With an EPC grade of D, it also offers a balance of comfort and energy efficiency. Don't miss the chance to make this delightful property your own.



Call us on
0151 329 3313
prescot@brooksestateandlettings.co.uk
www.brooksestateandlettings.co.uk

Council Tax Band
E



Agents Note: Whilst every care has been taken to prepare these particulars, they are for guidance purposes only. All measurements are approximate and are for general guidance purposes only and whilst every care has been taken to ensure their accuracy, they should not be relied upon and potential buyers are advised to recheck the measurements.

